

MUTOH Layer Editor

How to Edit Color Mode on Print File

1.	Introduction	1
2.	Basic Function	2
3.	How to Create Color Mode File in RIP	3
4.	How to Edit Color Mode in Layer Editor	12
5.	How to Edit Color Plane on Color Mode File	21

-
- Any part of this document may not be copied or reproduced without prior permission from Mutoh.
 - The specification of the application and information contained in this document are subject to change without notice.
 - The information contained in this document is believed to be correct at the time of publication. If you have any questions or find any issues on this document, please contact your local Mutoh dealer.
 - Mutoh shall not be liable for any damages or accidents caused by failure to follow the instructions on this document.
 - Company names and product names contained in this document are trademarks or registered trademarks of their respective owners.

1. Introduction

This user guide explains how to use the Color Mode Edit function on MUTOH Layer Editor (referred to as “Layer Editor”).

This function is available on Layer Editor Version 5.0.0 or later.

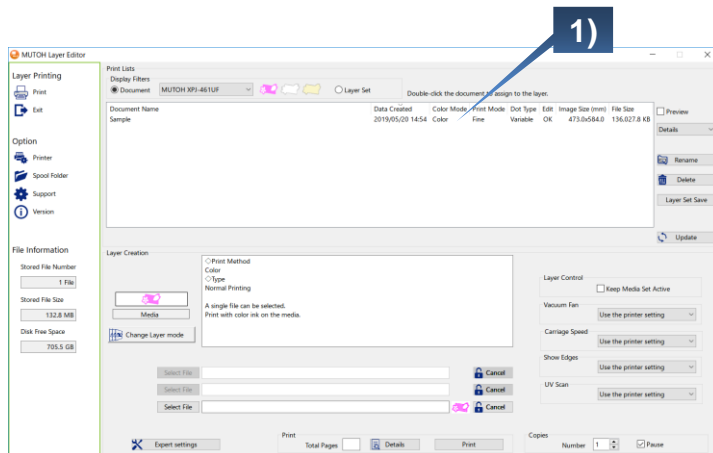
For the condition of use, see MUTO Layer Editor Operation Manual.

2. Basic Function

Color Mode Edit Dialog

The Color Mode Edit function in Layer Editor enables you to change the color mode of the original print file to the suitable color mode to be used for the single-layer printing.

Layer Editor - Print Data List in Main Menu

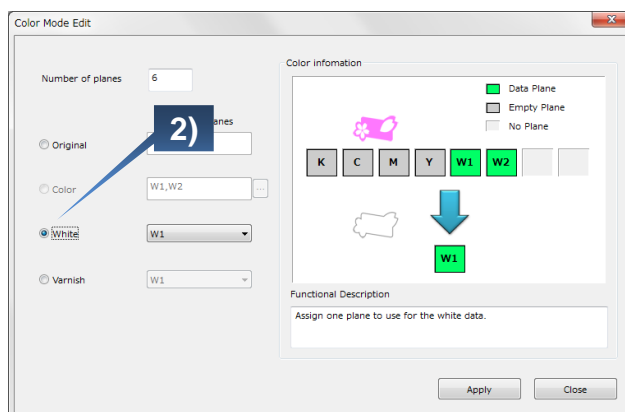


1) Color is applied to the original print file.

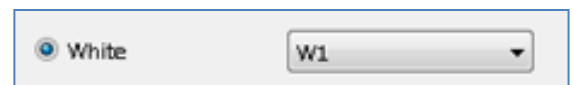
Data Created	Color Mode	Print File
2019/05/20 14:54	Color	Fi



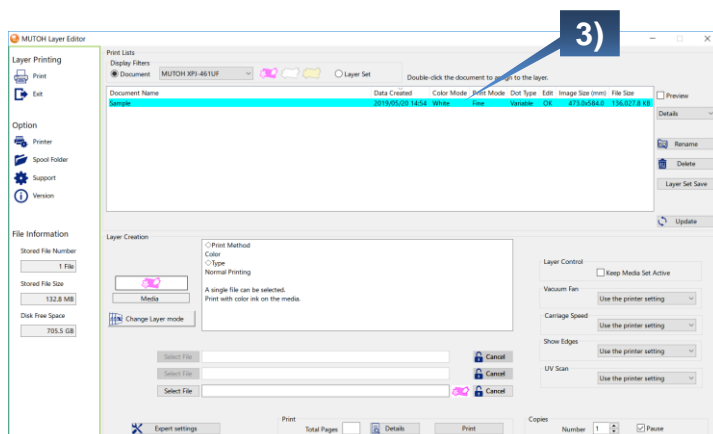
Layer Editor – Color Mode Edit dialog



2) Change the color mode from Color to White.



Layer Editor - Print Data List in Main Menu



3) The color mode has been changed to White.

Data Created	Color Mode	Print File
2019/05/20 14:54	White	Fi

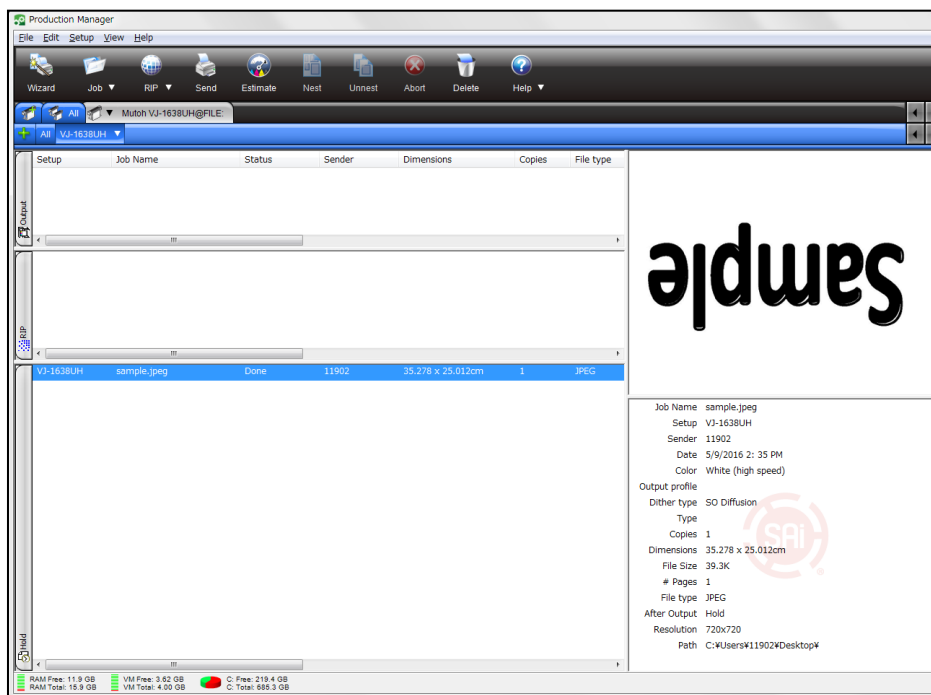
3. How to Create Color Mode File in RIP

RIP Software

Before using Layer Editor, please prepare a print file. In this example, we will use the SAI 'Production Manager 12' to explain the procedure. If you are using other RIP software, use these steps as a reference.

*For details, see the RIP manufacturer user guide.

SAI - Production Manager 12



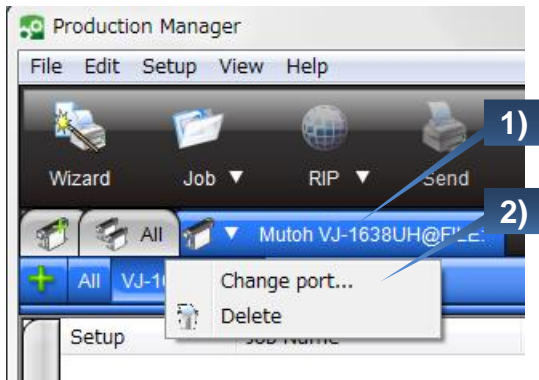
Save Print File in RIP software

This section explains how to save a print file on Production Manager 12.

Before following this step, save your print file in your local folder to be able to change the settings for Layer Editor.

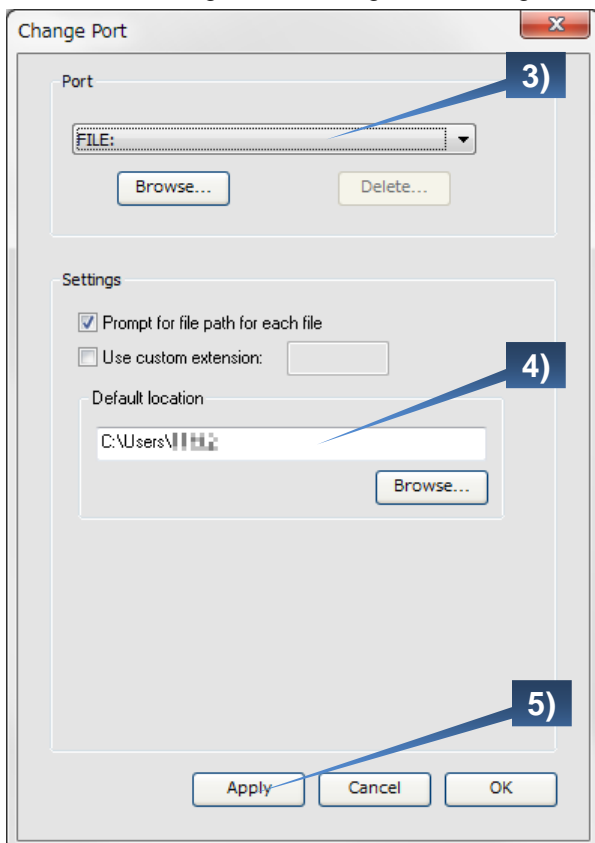
Procedure

Production Manager 12 - Main Menu

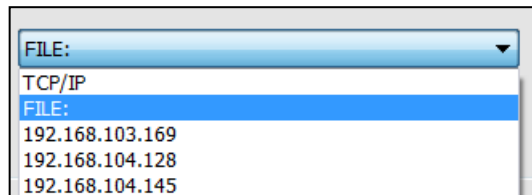


- 1) Right click on the printer driver name tab on the upper left of the main menu.
- 2) Click **Change port** from the menu.

Production Manager 12 - Change Port dialog



- 3) Select **FILE:** from the drop-down list.



- 4) Specify a folder to save the file.

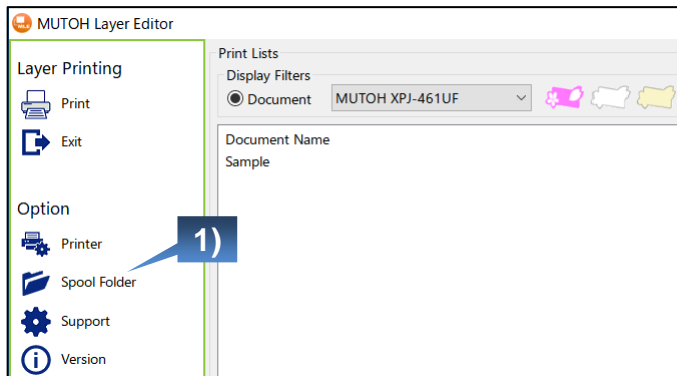
- 5) Click **Apply**.

Select Hot Folder in Layer Editor

In Layer Editor, you can specify a folder that you save the print file in your RIP software as Hot Folder. You will specify the Hot Folder from the Spool Folder option displayed on the left side of the main menu. Print files stored in the specified hot folder are automatically spooled to the Spool Folder of Layer Editor.

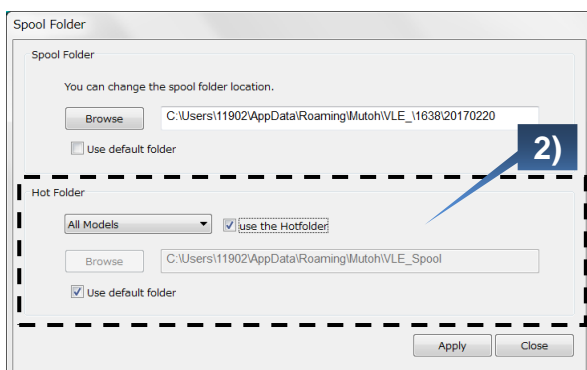
Procedure

Layer Editor – Main Menu

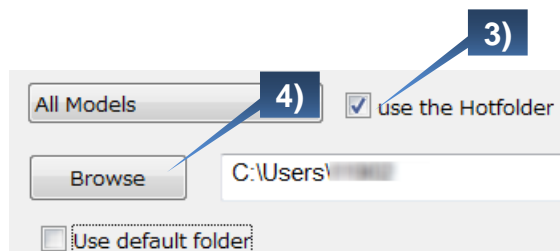


- 1) Click **Spool Folder**.

Layer Editor – Spool Folder

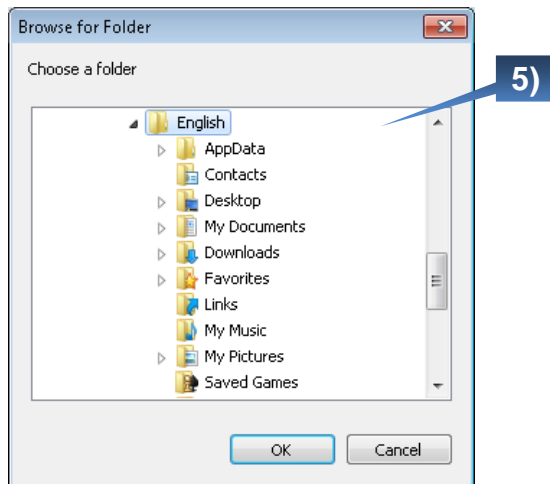


- 2) In the lower part of the Spool Folder, you can specify Hot Folder.

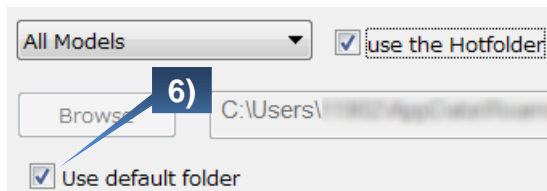


- 3) Check **Use the Hotfolder**.
- 4) Click **Browse** to open the Browse for Folder dialog.

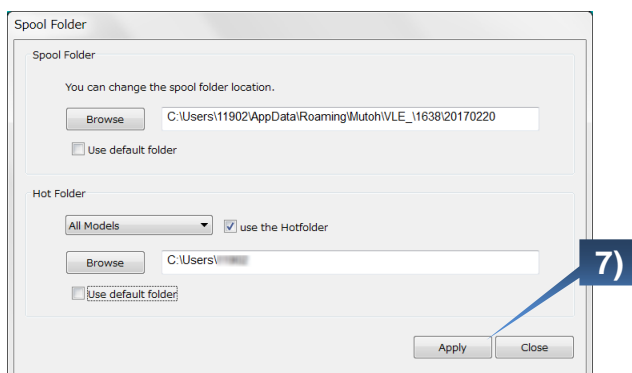
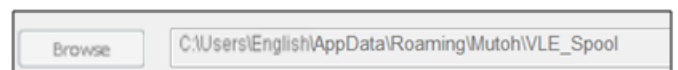
Browse for Folder dialog



5) Choose the folder that you save the print file in RIP.



6) To restore the default settings, check **Use default folder**. If checked, the Browse button will be disabled.



7) Click **Apply**.

Note

When importing the print file via hot folder, make sure that there is enough space left in your hard drive and note the following points:

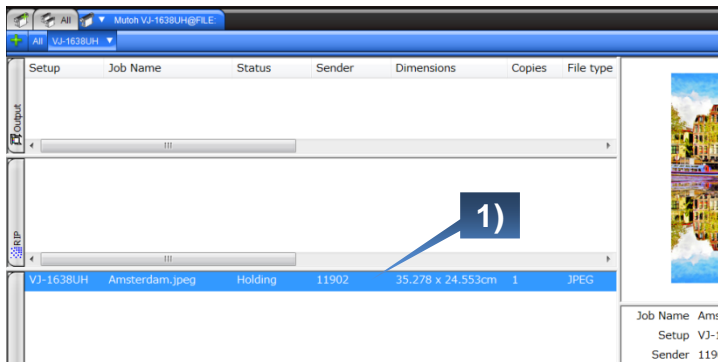
- If the hot folder and spool folder are stored in the different hard drive, all file in the hot folder will be copied to the spool folder and these files may exceed the capacity of the hard drive for the spool folder.
- If the dot type of the imported print file is not specified as variable dot, Layer Editor will automatically convert it into variable dot on every startup. If so, the file size will double.

Select Color Mode in RIP software

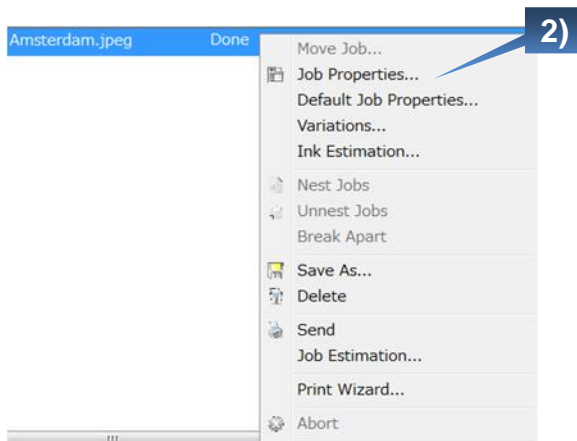
This section explains how to specify a color mode of the print file in RIP software using Production Manager 12. Follow the steps below to go to Main menu > Job Properties.

Procedure

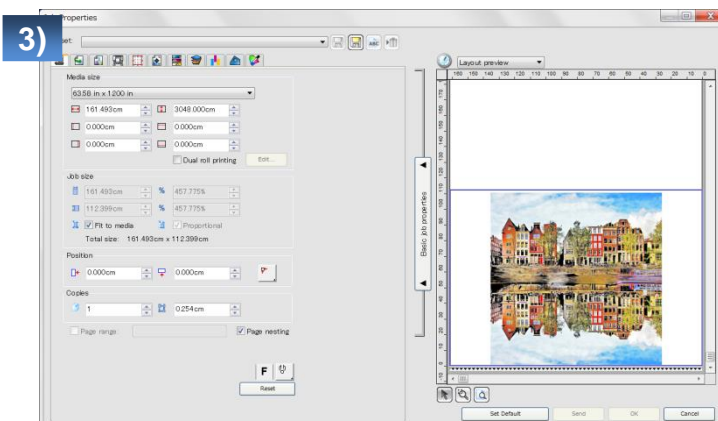
Production Manager 12 – Main Menu



- 1) Right click on the print file you want to specify the color mode.



- 2) The menu appears.
Select **Job Properties** from the menu.

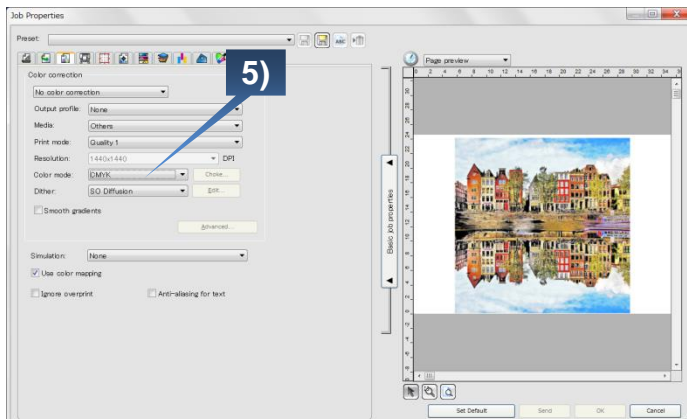


- 3) The Job Properties dialog appears.

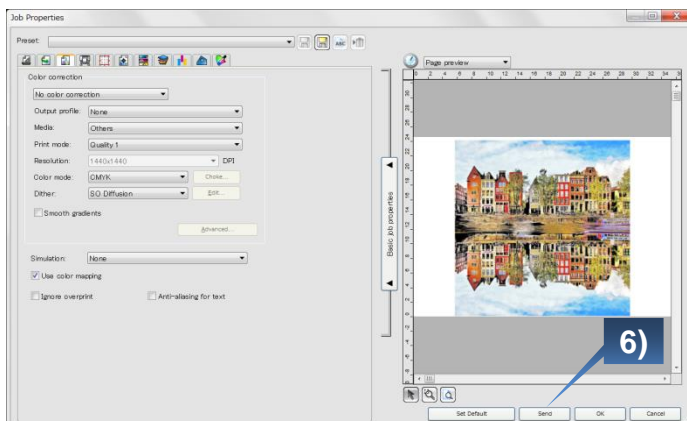
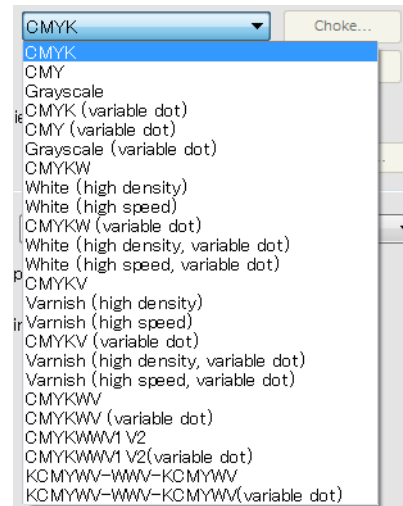


4) Click on the 3rd tab icon from the left.

Production Manager12 - Job Properties 3rd tab



5) From the Color mode option, click the drop-down arrow and select your desired color mode. (*1)



6) Click **Send** or **OK** on the lower right of the dialog to confirm the color mode.

(*1) Option setting is required for White or Varnish color mode. See the procedures from the next page.

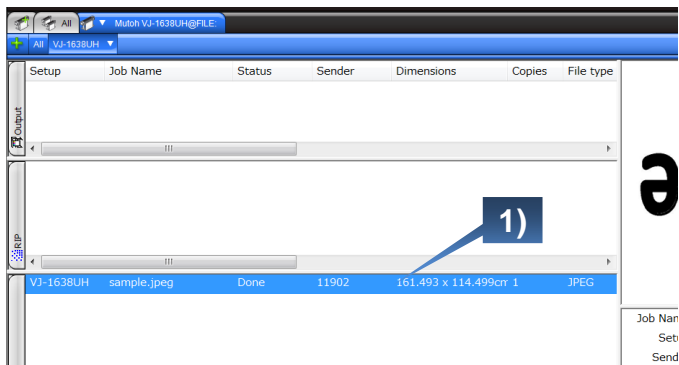
Specify White and Varnish Options

This section explains how to specify the White and Varnish options on the White or Varnish color mode settings in Production Manager 12.

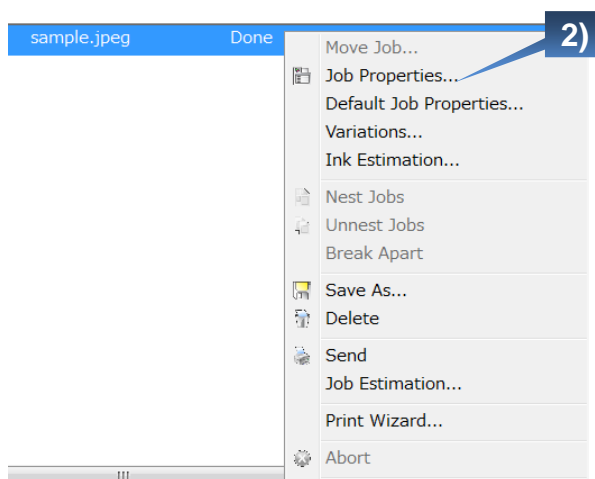
In the White and Varnish options, choose other than 'Spot Color'.

Procedure

Production Manager 12 – Main Menu

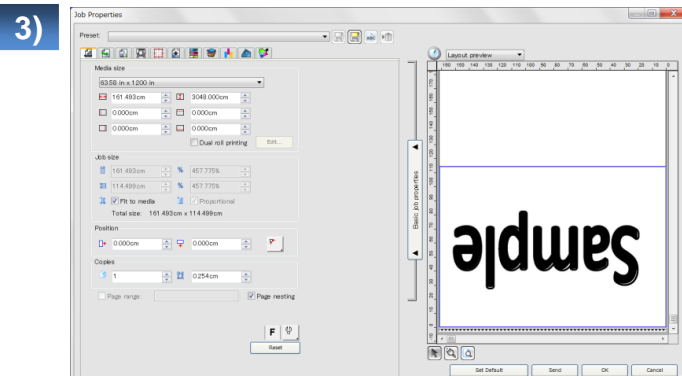


- 1) Right click on the print file you want to specify the color mode.



- 2) The menu appears.
Select **Job Properties** from the menu.

Production Manager 12 - Job Properties 1st tab

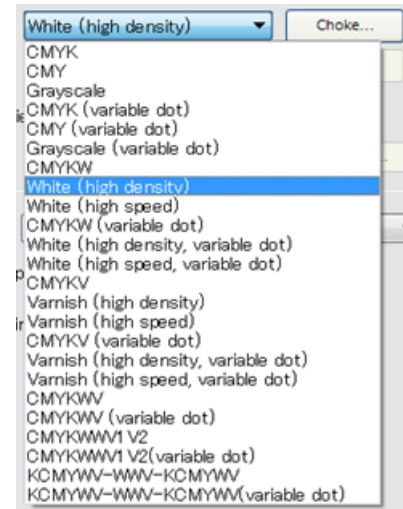
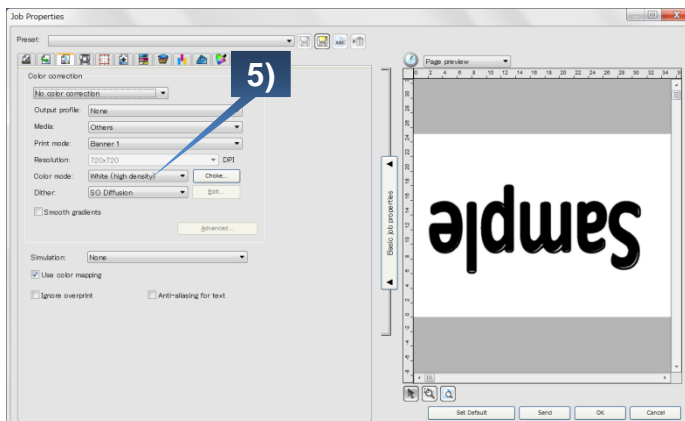


- 3) The Job Properties dialog appears.



4) Click on the 3rd tab icon from the left.

Production Manager 12 - Job Properties 3rd tab

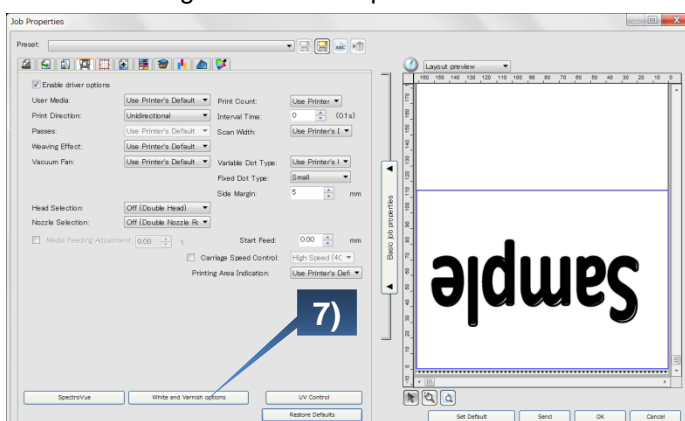


5) From the Color mode option, click the drop-down arrow. Depending on your desired color mode, select one of followings:

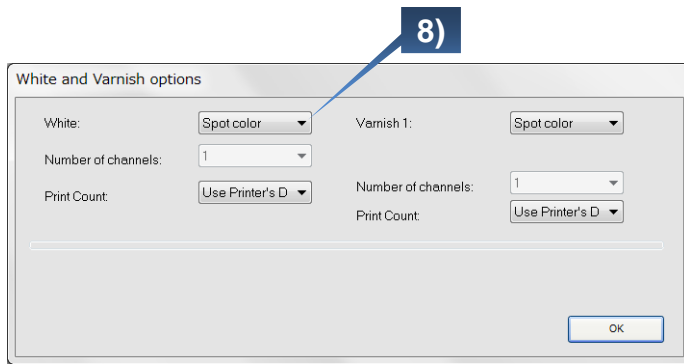


6) Click on the 4th tab from the left.

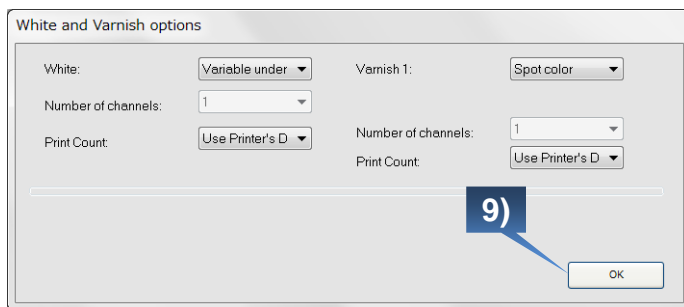
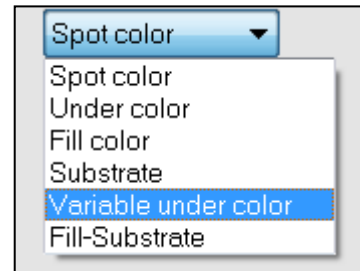
Production Manager 12 - Job Properties 4th tab



7) Click **White and Varnish options**.



In the White and Varnish options dialog, choose other than 'Spot color' from the White or Varnish1 field depending on your desired color mode.



Click **OK**.

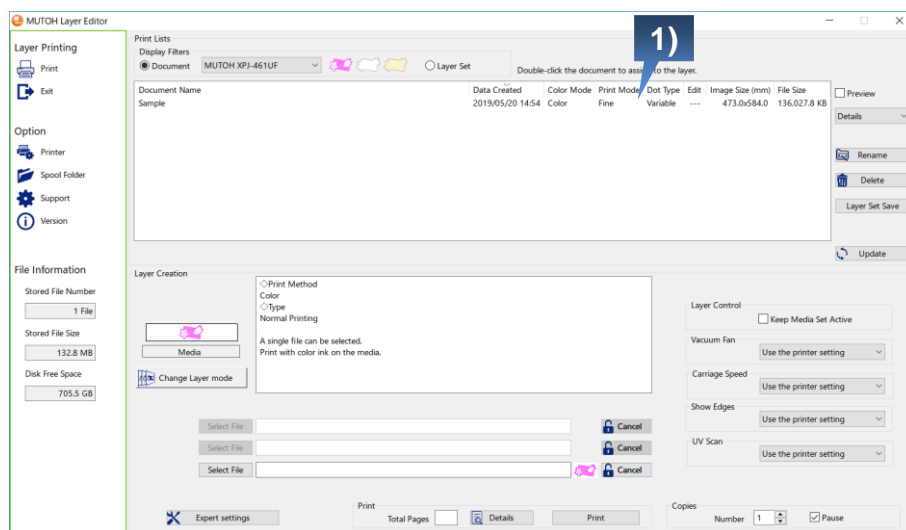
4. How to Edit Color Mode in Layer Editor

Open Color Mode Edit Dialog

This section explains how to open the Color Mode Edit dialog. Follow the steps below to access from the Preview dialog by clicking the Color Mode Edit button.

Procedure

Layer Editor – Main Menu



- 1) Start Layer Editor. When receiving a new file, Layer Editor determines if the Color Mode Edit function is available for a new file.

The print data list shows the mark '-' on the Edit column during determination.

When the determination result is available, the icon appears next to the Update button.

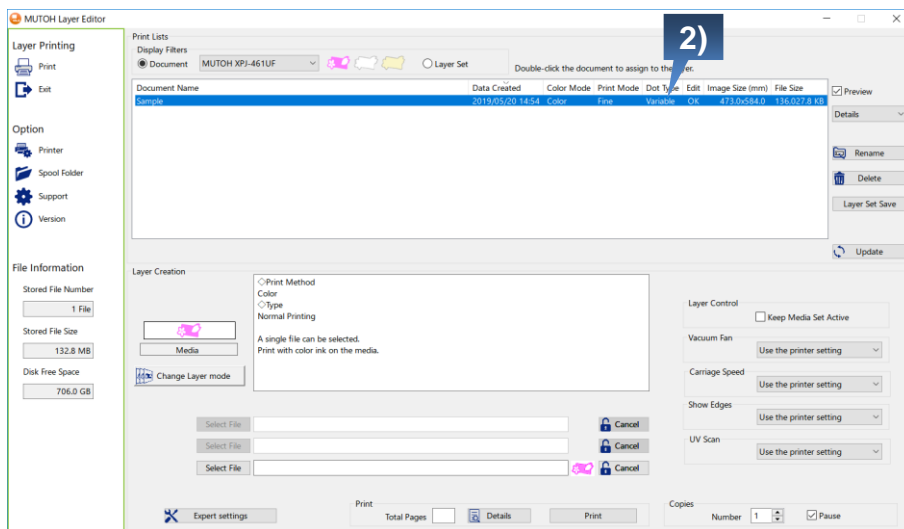
Click **Update** to update the list.

If the determination process is successfully completed, the message 'OK' appears.

Document Name	Data Created	Color Mode	Print Mode	Dot Type	Edit
Sample	2019/05/20 14:54	Color	Fine	Variable	---

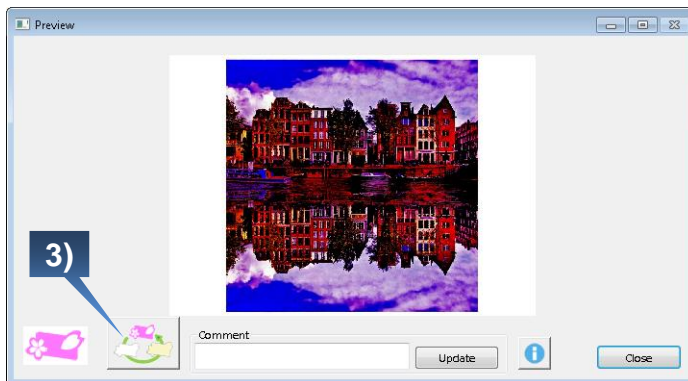


Document Name	Data Created	Color Mode	Print Mode	Dot Type	Edit
Sample	2019/05/20 14:54	Color	Fine	Variable	OK



- 2) Select the print file you want to use on the list, and check **Preview**.

Layer Editor – Preview dialog

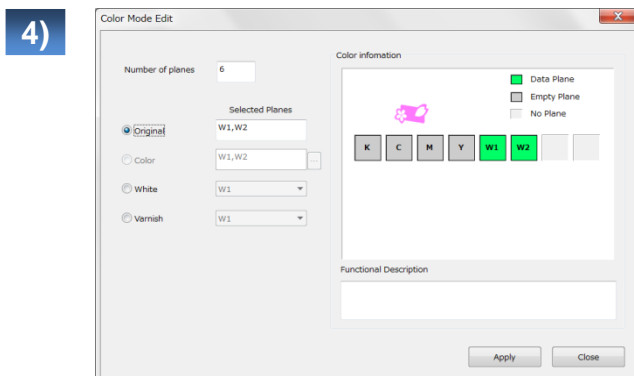


- 3) The Preview dialog appears.
Click on the **Color Mode Edit** icon.



The dialog to the left appears while processing the file.

Layer Editor – Color Mode Edit dialog



- 4) The Color Mode Edit dialog appears.

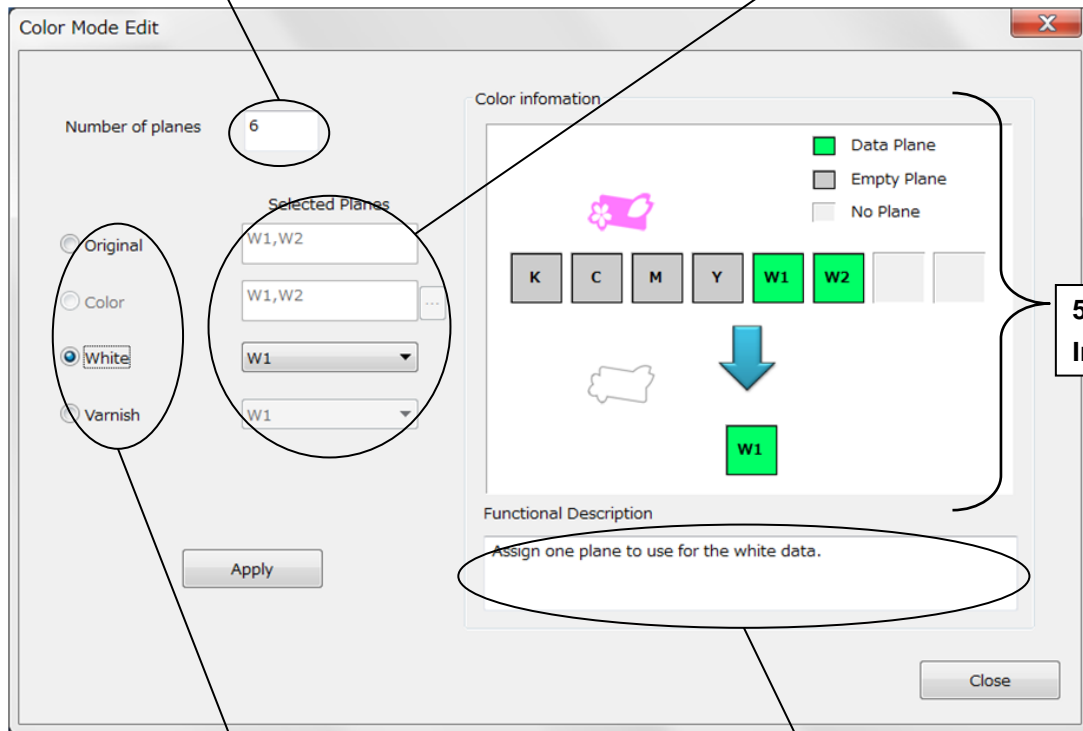
Color Mode Edit dialog

1) Number of planes

Displays the number of planes that the original print file consists of.

3) Selected Planes

Select ink planes to enable for printing.



2) Color Mode

Select a new color mode that you want to apply to your print file.

4) Functional Description

Displays the functional description of the selected color mode.

5) Color Information

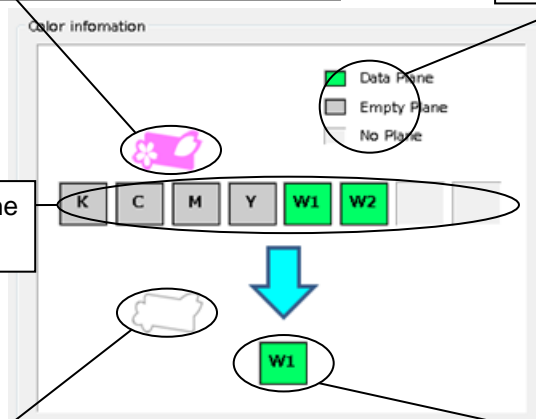
5)-1 Original color mode of the print file

5)-2 Color legend

5)-3 Ink planes applied to the original print file.

5)-4 New color mode applied to the print file.

5)-5 New ink planes applied to the print file.



Example - How to Change the Color Mode to White -

First, you will prepare a print file with the White color mode setting using Production Manager 12.

To select a color mode for White or Varnish print file, choose a mode with 'high speed' or 'high density' setting in Production Manager 12.

When 'White (high speed)' is selected, you can use the print file without changing the color mode in Layer Editor.

When 'White (high density)' is selected, you need to change the color mode to White in Layer Editor.

***This applies to both White and Varnish color modes.**

Ink planes applied to the original print file

high speed
r -1U SimpleColor



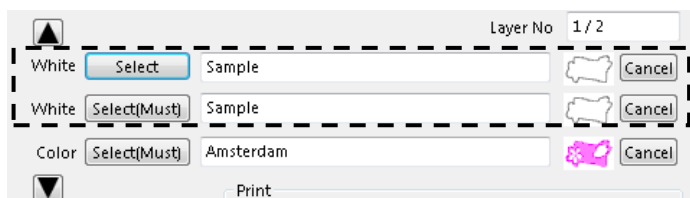
The print file consists of 1 plane and data exists in the K plane.

Layer Editor – Main Menu

When 'White (high speed)' is selected

Document Name	Data Created	Color Mode
sample.jpeg	2016/02/03 09:15	White

The print file is displayed with the correct color mode (White) on the Print Data List.



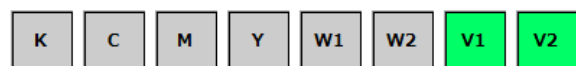
You can assign this print file to the White layer field without changing the color mode.

high density
r -6U SimpleColor



The print file consists of 6 planes and data exists in the W1 and W2 planes.

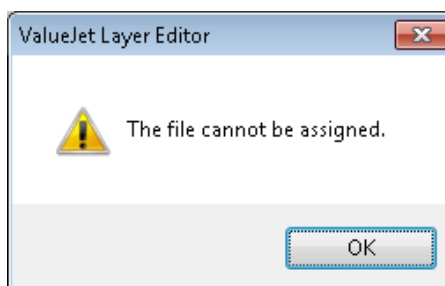
(When 'Varnish (high density)' is selected, the print file consists of 8 planes and data exists in the V1 and V2 planes.)



When 'White (high density)' is selected

Document Name	Data Created	Color Mode
sample.jpeg	2016/05/09 14:38	Color

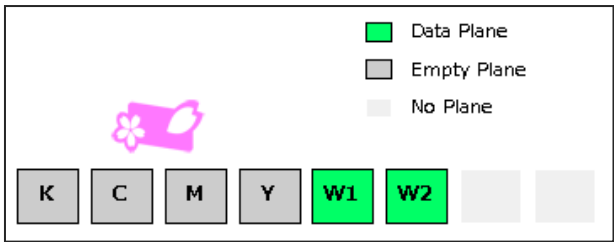
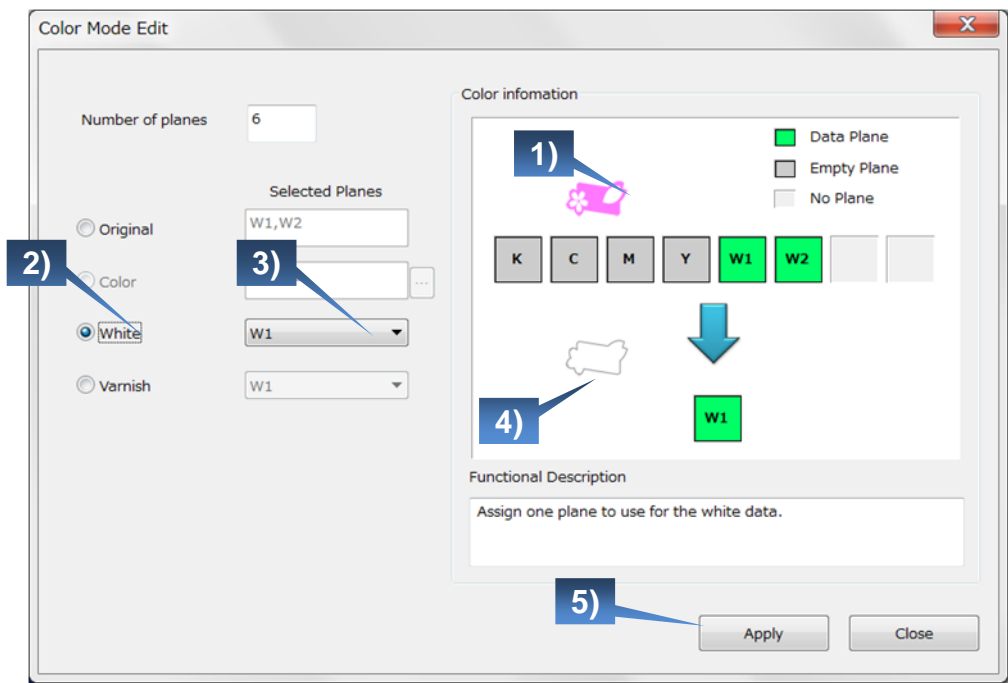
The print file is displayed with the wrong color mode (Color) on the Print Data List.



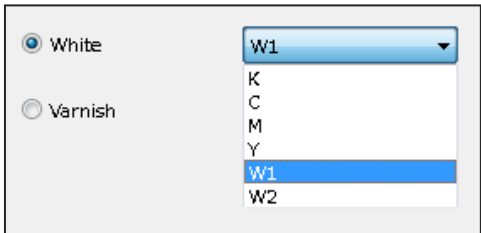
When attempting to assign this print file to the White layer field, the message above will appear. In that case, follow the steps on the next page to change the color mode to White.

Procedure

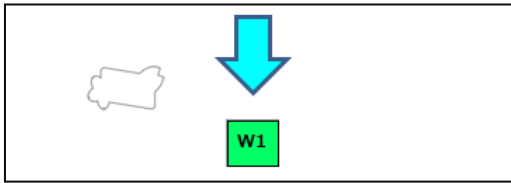
Change the color mode of a white print file (with high density) from Color to White.
Select White color mode and assign one white plane.
You can change the color mode from Color to Varnish based on the steps below.



- 1) Check the color mode and ink planes of the original print file.
Example shown at left:
- Color Mode: **Color**
 - The print file consists of **6 planes** and data exists in the **W1** and **W2 planes**.



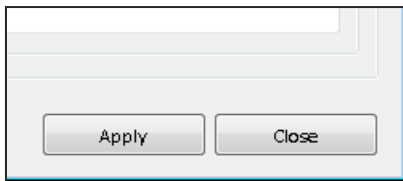
- 2) Change the color mode from Color to White.
3) Select W1 or W2.



4) Check the selected color mode and ink plane.

Example shown at left:

- Color mode: **White**
- The print file consists of **1 plane** and data exists in **the W1 plane**.



5) Click **Apply**.

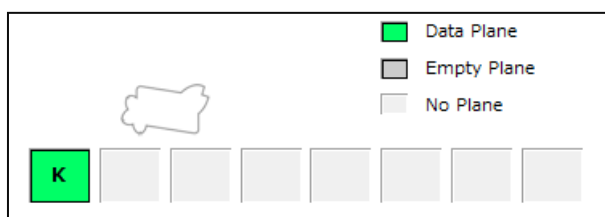
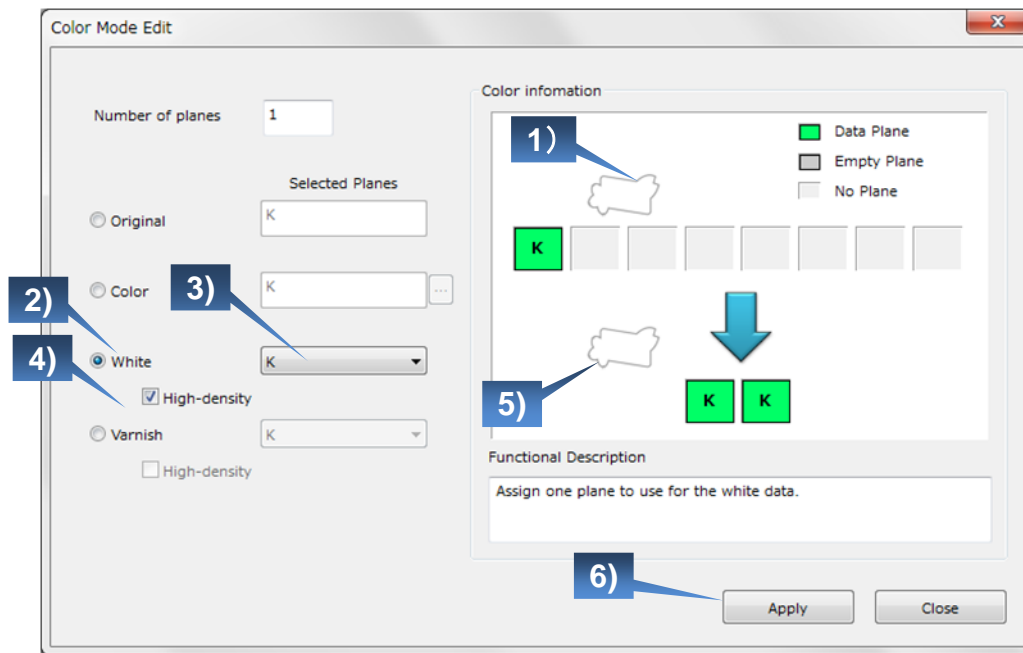
Example – How to Apply High-density Setting to White

In VJ-426UF and VJ-626UF, when selecting White or Varnish color mode, the High-density check box will appear. If you check this box, you can print the selected file with double density.

Procedure

This example explains how to apply high-density setting to white print file.

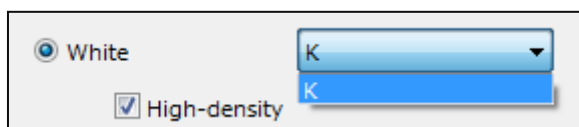
You can use this procedure when applying high-density setting to varnish print file.



1) Check the color mode and ink planes of the original print file.

Example shown at left:

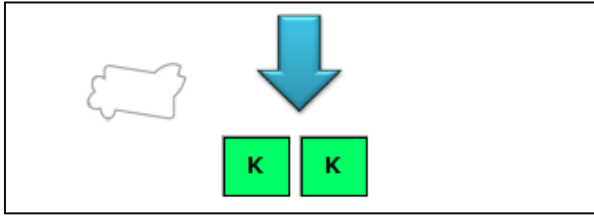
- Color Mode: White
- The print file consists of 1 plane and data exists in the K plane.



2) Check White color mode.

3) Select K from the drop-down list.

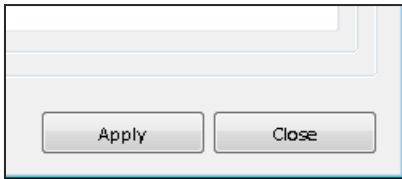
4) Check High-density.



5) Check the selected color mode and ink plane.

Example shown at left:

- Color mode: White
- The print file consists of 2 planes and data exists in the K plane.



6) Click Apply.

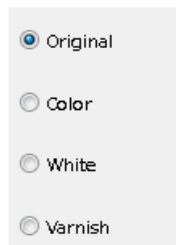
Print Data List View after Editing Color Mode

If the color mode of a print file is changed to Color, White or Varnish from the Color Mode Edit dialog, the edited file appears on the list with background color.

To restore to the original color mode, select Original from the Color Mode Edit dialog.

Layer Editor - Color Mode Edit dialog

Layer Editor - Print Data List in Main Menu




A dialog box with four radio buttons: Original (selected), Color, White, and Varnish.



Document Name	Data Created	Color Mode
sample	2016/05/09 14:38	Color
amsterdam	2016/04/20 17:32	Color

Print file with original color mode



Three dialog boxes, each with four radio buttons. The first has 'Color' selected, the second has 'White' selected, and the third has 'Varnish' selected.



Document Name	Data Created	Color Mode
sample	2016/05/09 14:38	White
amsterdam	2016/04/20 17:32	Color

Print file after editing color mode

5. How to Edit Color Plane on Color Mode File

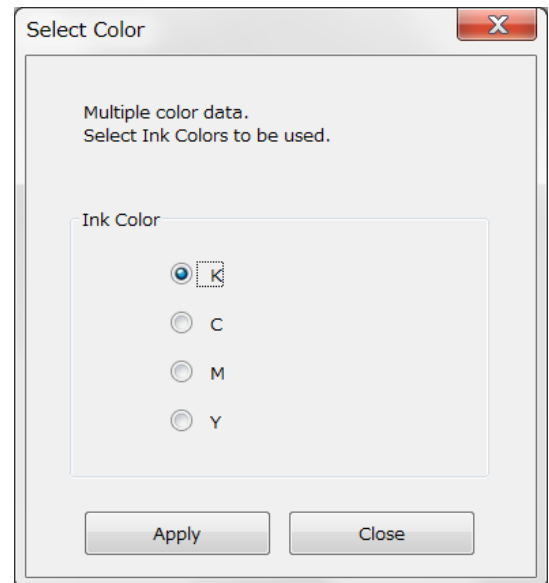
Select Color Dialog

In the Select Color dialog, you can assign the K/C/M/Y planes to a color mode file.

The 2 types of dialog are prepared for single plane data (number of color plane: 1) and multiple plane data (number of color plane: 2 or more).

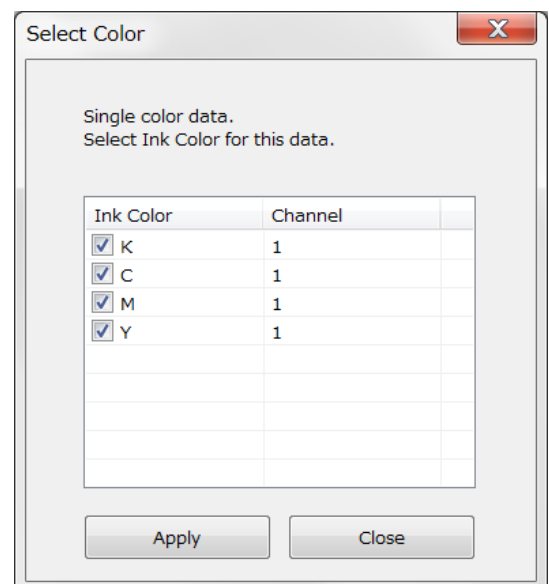
Ink planes applied to the original print file

The Select Color dialog



The print file consists of 1 plane and data exists in the K plane.

Select single plane to be assigned.



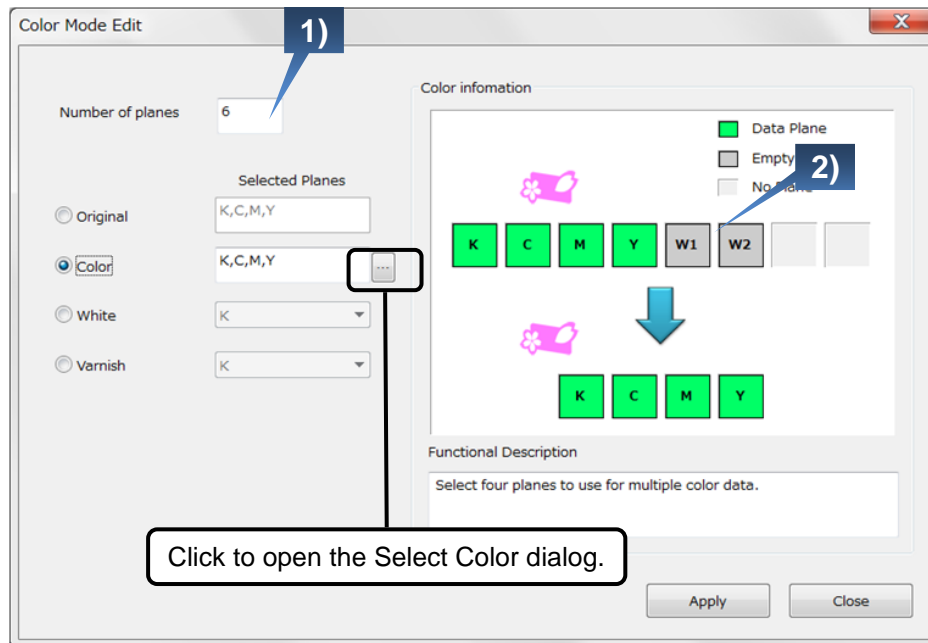
The print file consists of 6 planes and data exists in the K/C/M/Y planes.

Select multiple planes to be assigned.

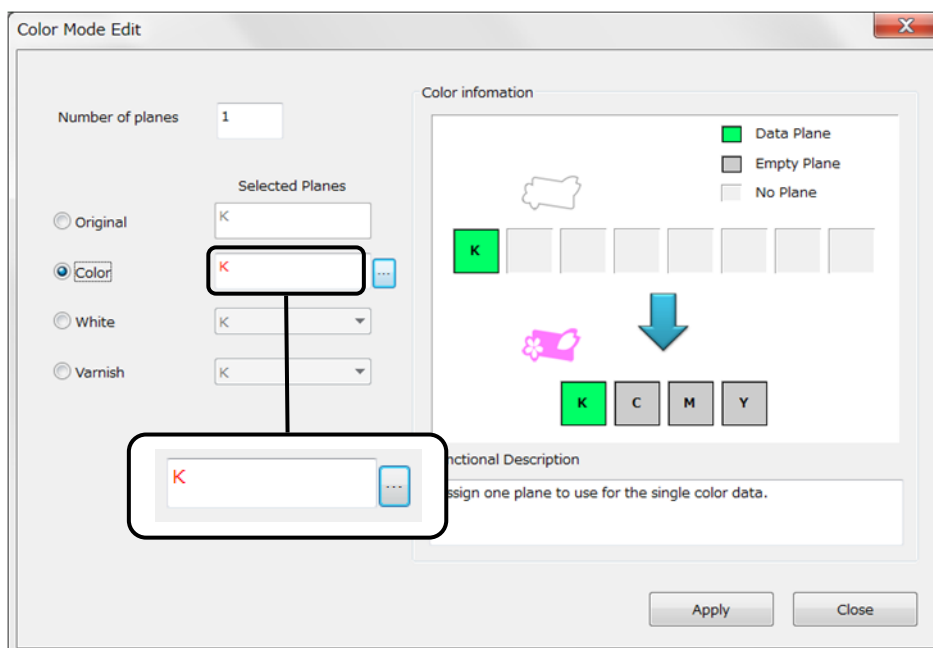
Open Select Color Dialog

Click the **Select Color button** to open the Select Color dialog.

To check which single or multiple plane is assigned to a print file, see 1) Number of planes or 2) Ink planes.

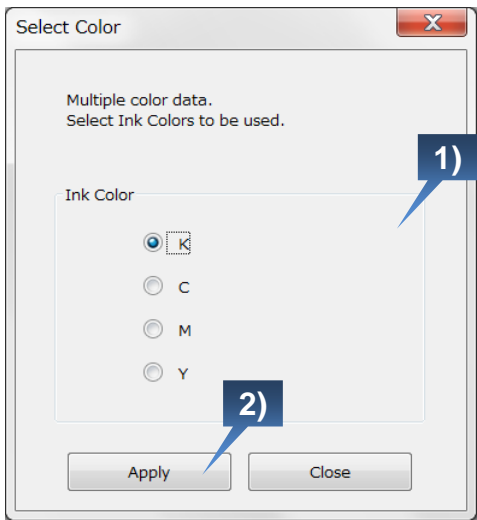


If a print file consists of a single plane, the text in the Selected Plane field is shown in red font.



Edit Color Plane on Single Plane Data

If a print file consists of a single plane, the following Select Color dialog appears.
Select one ink plane from K/C/M/Y to be assigned.



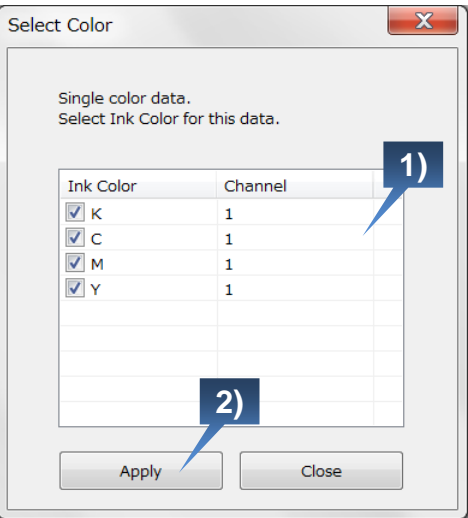
- 1) Select one ink plane from K/C/M/Y.
- 2) Click **Apply**.

The selected ink plane is reflected to the Color Mode Edit dialog.

When the K plane is assigned:		When the Y plane is assigned:	
The Select Color dialog	Color Mode Edit dialog - The Selected Planes field	The Select Color dialog	Color Mode Edit dialog - The Selected Planes field

Edit Color Planes on Multiple Plane Data

If a print file consists of multiple planes, the following Select Color dialog appears.
The K/C/M/Y planes should be assigned in the original print file. Select your desirable planes to be assigned.



- 1) Check your desirable ink planes from K/C/M/Y.
- 2) Click **Apply**.

The selected ink plane is reflected to the Color Mode Edit dialog.

When the K plane is assigned:		When the K/C/M/Y planes are assigned:	
The Select Color dialog	Color Mode Edit dialog - The Selected Planes field	The Select Color dialog	Color Mode Edit dialog - The Selected Planes field

MUTOH